


## LETTERS

# Multiple spatial behaviours govern social network positions in a wild ungulate

Gregory F. Albery,<sup>1,2\*</sup>   
 Alison Morris,<sup>2</sup> Sean Morris,<sup>2</sup>  
 Josephine M. Pemberton,<sup>2</sup>  
 Tim H. Clutton-Brock,<sup>2,3</sup>  
 Daniel H. Nussey<sup>2</sup> and  
 Josh A. Firth<sup>4,5</sup>

### Abstract

The structure of wild animal social systems depends on a complex combination of intrinsic and extrinsic drivers. Population structuring and spatial behaviour are key determinants of individuals' observed social behaviour, but quantifying these spatial components alongside multiple other drivers remains difficult due to data scarcity and analytical complexity. We used a 43-year dataset detailing a wild red deer population to investigate how individuals' spatial behaviours drive social network positioning, while simultaneously assessing other potential contributing factors. Using Integrated Nested Laplace Approximation (INLA) multi-matrix animal models, we demonstrate that social network positions are shaped by two-dimensional landscape locations, pairwise space sharing, individual range size, and spatial and temporal variation in population density, alongside smaller but detectable impacts of a selection of individual-level phenotypic traits. These results indicate strong, multifaceted spatiotemporal structuring in this society, emphasising the importance of considering multiple spatial components when investigating the causes and consequences of sociality. *Ecology Letters* (2021)

### INTRODUCTION

Social behaviour is an integral component of an animal's phenotype, driving processes including disease transmission, mating, learning, and selection (Croft *et al.* 2008; VanderWaal *et al.* 2014; Krause *et al.* 2015; Firth *et al.* 2018; Sah *et al.* 2018; Silk *et al.* 2019; Firth 2020). Contemporary studies of animal behaviour often use social networks to derive individual-level network positions, under the assumption that between-individual variation in network positioning is indicative of between-individual variation in social behaviour (Franks *et al.* 2010; Krause *et al.* 2015; Sosa *et al.* 2021). However, an animal's position in its social network also interacts with its own spatial behaviour (Pinter-Wollman *et al.* 2014; Spiegel *et al.* 2016; Webber & Vander Wal 2018; Albery *et al.* 2021), and with a range of extrinsic factors: demography determines local population density and structuring (Shizuka & Johnson 2020), whereas the environment shapes resource distributions, movement corridors and emergent patterns of space use, all of which will influence the architecture of the social system (Firth & Sheldon 2016; Webber & Vander Wal 2018; Farine & Sheldon 2019; He *et al.* 2019). Moreover, the social environment itself can drive space use decisions, creating a bidirectional causal relationship between the two (Firth & Sheldon 2016; Spiegel *et al.* 2016). As such, it is important to consider spatial behaviour and environmental context when assessing the causes and consequences of individual-level social network positioning (Pinter-Wollman *et al.* 2014; Spiegel *et al.* 2016; Webber & Vander Wal 2018; He *et al.* 2019; Albery *et al.* 2021), yet doing so remains difficult in most systems due to the complexity of spatial-social analyses that incorporate these processes.

The spatial correlates of social network structure are poorly understood because they are highly multivariate and

(therefore) difficult to analyse. Encouragingly, strong support exists for simple associations between individuals' spatial and social behaviours. For example, spatial proximity and social connections are often correlated, because (1) individuals that share more space are more likely to associate or interact and (2) those that are socially affiliated are likely to opt to share more space (Firth & Sheldon 2016; Spiegel *et al.* 2016). Correlated spatial-social proximity has been observed in diverse taxa including elk (Vander Wal *et al.* 2014), raccoons (Robert *et al.* 2012), birds (Firth & Sheldon 2016), and myriad other systems. Similarly, spatial and social network centrality are occasionally found to correlate (Mourier *et al.* 2019), as are temporal variations in population density and social contact rates (Sanchez & Hudgens 2015). However, spatial behaviours can be summarised using a wide range of metrics, including individuals' spatial activity levels (e.g. home range area), pairwise space sharing (e.g. distances or home range overlaps), demographic structure (e.g. temporal population size or local conspecific density), and point location on the two-dimensional landscape; the interplay between these spatial traits and social network positioning is much more poorly understood than spatial-social proximity. For example, are more social individuals simply wider-ranging, leading them to make more contacts? Do they most often inhabit areas of high population density or well-used movement corridors? These variable spatial components take a combination of different data structures, and are therefore difficult to include in the same models, particularly in large numbers and alongside a range of other individual-level phenotypes. Additionally, spatial data such as telemetry or 'gambit of the group' approaches are occasionally used to approximate or estimate social behaviour, so space and sociality may be confounded at the data collection level, and may then be difficult to extricate (Albery *et al.* 2021). It is therefore unclear to what extent individuals'

<sup>1</sup>Department of Biology, Georgetown University, Washington, DC, USA

<sup>2</sup>Institute of Evolutionary Biology, University of Edinburgh, Edinburgh, UK

<sup>3</sup>Department of Zoology, University of Cambridge, Cambridge, UK

<sup>4</sup>Department of Zoology, University of Oxford, Oxford, UK

<sup>5</sup>Merton College, University of Oxford, Oxford, UK

\*Correspondence: Email: gfalbery@gmail.com

social network positions are representative of (1) their own social behaviour; (2) their own spatial behaviour; (3) their situation within the population; (4) other aspects of their biotic and abiotic environment such as landscape structure and; (5) the intrinsic phenotypic traits that researchers are commonly interested in investigating.

Several frameworks have been proposed to facilitate the untangling of spatial and social processes in wild animals (Jacoby & Freeman 2016; Silk *et al.* 2018, 2019; Webber & Vander Wal 2018; Mourier *et al.* 2019; Albery *et al.* 2021). To date, statistical methods focus on incorporating socio-spatial behaviours into the node-and-edge structure of network data, using e.g. null network permutations (Firth & Sheldon 2016), spatially embedded networks (Daraganova *et al.* 2012), and nested 'networks of networks' composed of movement trajectories (Mourier *et al.* 2019). Many such analyses involve reducing movement patterns into some form of spatial network based on home range overlap or spatial proximity between dyads, which are then incorporated into models. For example, statistical models named 'animal models' can examine spatial variation by fitting such matrices as variance components, potentially alongside other dyadic similarity matrices (i.e. pairwise measures of similarity), to quantify genetic and non-genetic contributions to individuals' phenotypes (Kruuk 2004; Stopher *et al.* 2012b; Regan *et al.* 2016; Thomson *et al.* 2018; Webber & Vander Wal 2018). As yet, the focus on controlling for spatial autocorrelation using space sharing and network permutations has contributed to a lack of clarity concerning the role that spatial behaviour and environmental context play in driving social network positioning (Albery *et al.* 2021).

Studies across ecological disciplines increasingly use Integrated Nested Laplace Approximation (INLA) models to control for spatial autocorrelation in a multitude of contexts (Lindgren *et al.* 2011; Lindgren & Rue 2015; Zuur *et al.* 2017). As well as including fixed and random effects to quantify individual-level drivers, these models can incorporate dyadic space sharing components (Holand *et al.* 2013) and stochastic partial differentiation equation (SPDE) effects to model two-dimensional spatial patterns in the response variable, thereby controlling for and estimating spatiotemporal variation associated with fine-scale positioning within the landscape (Albery *et al.* 2019). As such, these models offer an exciting opportunity to test and compare the roles of a range of spatial behaviours and autocorrelation structures, alongside phenotypic drivers, in determining social network positioning.

We address this question using the long-term study in the Isle of Rum red deer (*Cervus elaphus*). These study animals comprise an unmanaged wild population with a contiguous fission-fusion social system (Clutton-Brock *et al.* 1982). They experience strong environmental gradients and (therefore) exhibit spatial autocorrelation in a number of important phenotypes: individuals with greater home range overlap have more similar behavioural and life-history traits (Stopher *et al.* 2012b), and those in closer proximity have more similar parasite burdens (Albery *et al.* 2019). Furthermore, as with other matrilineal mammalian systems, closely related individuals frequently associate (Clutton-Brock *et al.* 1982) and live closer together (Stopher *et al.* 2012b). Individuals have highly

repeatable home ranges (Stopher *et al.* 2012b) that decline in size over their lifetimes, predicting declining survival probability (Froy *et al.* 2018). The study area has a strong spatial gradient in resource availability, with high-quality grazing heavily concentrated in the far north of the system, and with most individuals aggregating around this area (McCloughlin *et al.* 2006), such that population density decreases outwards towards the edge of the study population (Clutton-Brock *et al.* 1982). As such, the deer comprise a useful system for assessing spatial-social relationships in the wild.

To assess how individuals' spatial behaviours translate to social network positions, we constructed fine-scale social networks from 43 years of censuses of the study population. We derived eight different individual-level network positioning measures of varying complexity that are important to different social processes (Krause *et al.* 2015). Using multi-matrix animal models in INLA, we examined whether spatial locations, space sharing, home range area, and local population density explained variation in network position metrics, alongside a range of individual-, temporal- and population-level factors. Specifically, we aimed to test two hypotheses: that the structure of the social network would be highly dependent on the distribution of population density in space; and that individuals' social network centrality would be largely explained by their ranging behaviour, where wide-ranging individuals were more likely to be socially well-connected. We further expected that space sharing and point locations would uncover substantial spatial autocorrelation in social network positioning, and that different social network metrics would exhibit different spatial patterns and drivers. This not only comprises a large-scale empirical examination of the factors shaping social network positions in this extensively monitored wild mammal, but also provides a methodological advancement in developing powerful, flexible new methods (INLA-based multi-matrix animal models) with broad potential for examining spatial-social processes in this and other systems.

## METHODS

### Study system and censusing

The study was carried out on an unpredated long-term study population of red deer on the Isle of Rum, Scotland (57°N, 6°20'W). The natural history of this matrilineal mammalian system has been studied extensively (Clutton-Brock *et al.* 1982), and we focussed on females aged 3+ years, as these individuals have the most complete associated census data, and few males live in the study area except during the mating period. Individuals are monitored from birth, providing substantial life history and behavioural data, and > 90% of calves are caught and tagged, with tissue samples taken (Clutton-Brock *et al.* 1982). The population thus has comprehensive genomic data, allowing high-powered quantitative genetic analyses: most individuals born since 1982 have been genotyped at > 37 000 SNPs, distributed throughout the genome (e.g. Huisman, Kruuk, Ellis, Clutton-Brock, & Pemberton, 2016). Census data were collected for the years 1974–2017, totalling 423 070 census observations. Deer were censused by field workers five times a month, for 8 months of the

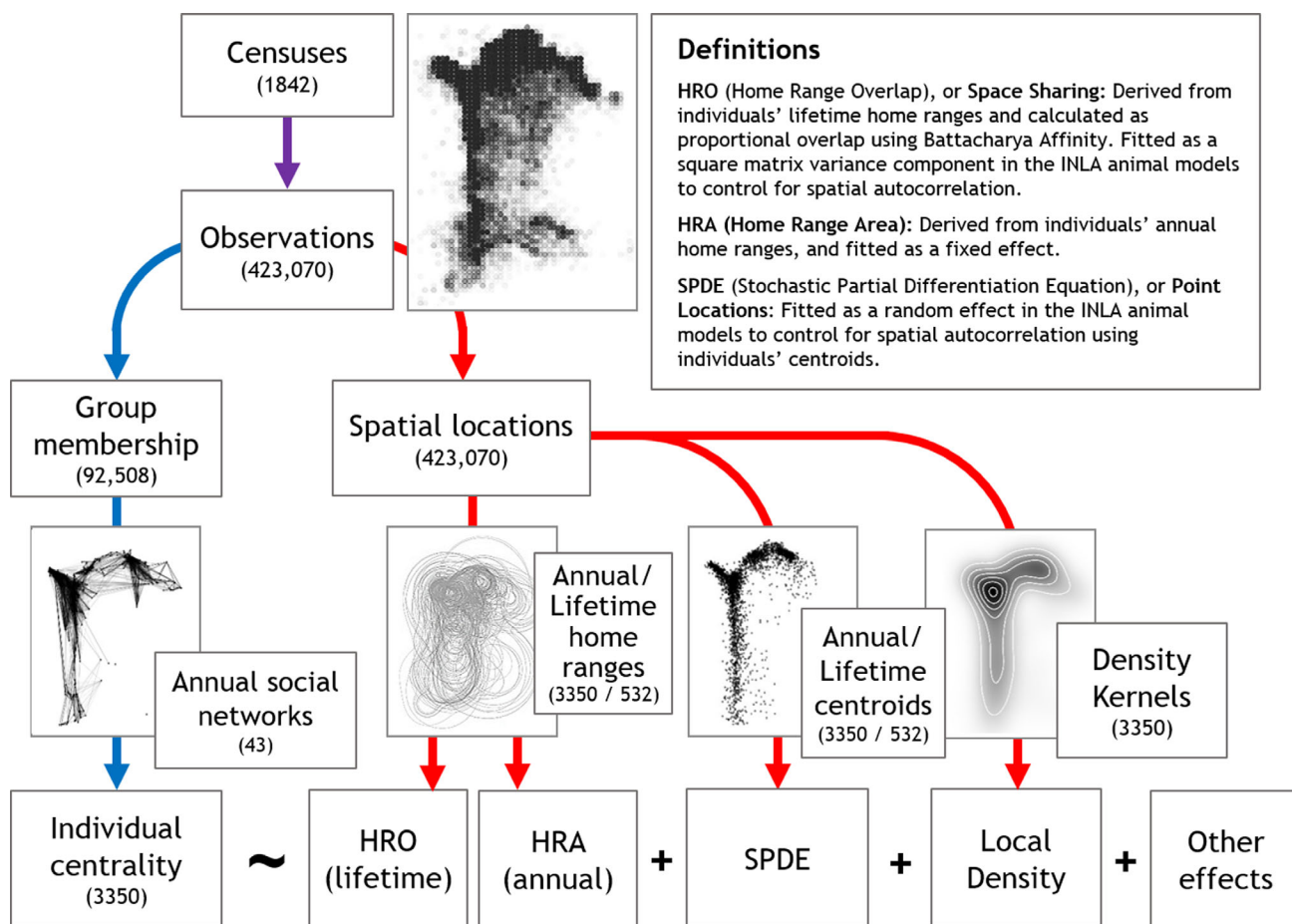
year, along one of two alternating routes (Clutton-Brock *et al.* 1982). Individuals' identities, locations (to the nearest 100M), and group membership were recorded. Grouping events were estimated by seasoned field workers according to a variant of the 'chain rule' (e.g. Castles *et al.*, 2014), where individuals grazing in a contiguous group within close proximity of each other (each individual under  $\sim 10$  metres of at least one other individual in the group) were deemed to be associating, with mean 130.4 groups observed per individual across their lifetime (range 6–943). The mortality period falls between Jan and March, when there is the least available food, and minimal mortality occurs outside this period. We only used census records in each May–December period, from which we derived annual social network position measures as response variables (Figures 1 and 2). We elected to investigate this seasonal period because it stretches from the spring calving period until the beginning of the mortality period, simplifying network construction and avoiding complications arising from mortality events. Our dataset totalled 3356 annual observations among 532 grown females (Figure 1).

In this system, female reproduction imposes substantial costs for immunity and parasitism (Albery *et al.* 2020b), and

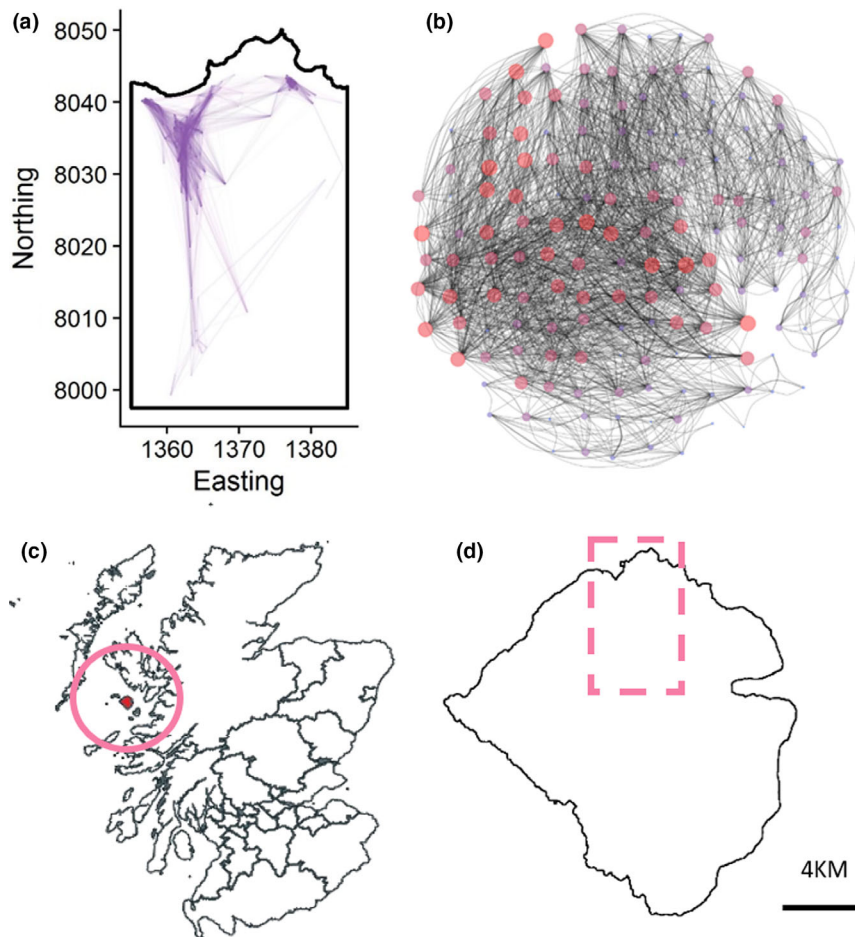
for subsequent survival and reproduction (Clutton-Brock, Albon, & Guinness, 1989; Froy, Walling, Pemberton, Clutton-Brock, & Kruuk, 2016). If a female reproduces, she produces 1 calf per year in the spring, generally beginning in May; the 'deer year' begins on May 1 for this reason. Here, reproductive status was classified into the following four categories using behavioural observations: True Yeld (did not give birth); Summer Yeld (the female's calf died in the summer, before 1st October); Winter Yeld (the female's calf died in the winter, after 1st October) and Milk (calf survived to 1st May the following calendar year).

## GENERATING SPATIAL AND SOCIAL MATRICES

All code is available online at [https://github.com/gfalbery/Spocial\\_Deer](https://github.com/gfalbery/Spocial_Deer). We constructed the home range overlap (HRO) matrix using the R package AdeHabitatHR (Calenge 2011), following previous methodology (Stopher *et al.* 2012b; Regan *et al.* 2016; Froy *et al.* 2018). First, using a kernel density estimation method, we derived lifetime home ranges for each individual with more than five census observations. Previous analysis has shown that this system is robust to the subset of



**Figure 1** Data processing and analysis pipeline, demonstrating how behavioural census data were collected, used to derive social and spatial behavioural traits, and fitted in INLA animal model GLMMs. Numbers in brackets represent sample sizes, and only include females aged 3+ years. Blue arrows represent social behaviour; red arrows represent spatial behaviours. See methods for the fixed and random effects. The text box displays the definitions for the different spatial effects



**Figure 2** Spatial structuring of the 2016 social association network as a representative example. a: the spatial locations (centroids) of individual deer, connected by their social associations. Line opacity and width are weighted by connection strength. Ten axis units = 1KM. b: the same social network with the nodes positioned in a network spring-layout (Csardi & Nepusz 2006) and then expanded into an even, circular grid according to their nearest spatial positions in A. The points' (i.e. nodes') sizes and colours show individuals' strength centrality (large and red = high strength; small and blue = low strength). Thickness of the lines (i.e. edges) connecting them shows dyadic association strength between individuals. c: the position of the Isle of Rum in Scotland and d: the position of the examined area in the context of the Island as a whole

observations used to generate home ranges (Froy *et al.* 2018). We used lifetime home ranges to fit one value per individual in the animal models; individual ranges (and range sizes) correlate strongly from year to year (Stopher *et al.* 2012b; Froy *et al.* 2018). We derived proportional HRO of each dyad using Bhattacharya Affinity (following Stopher *et al.* 2012b), producing values between 0 and 1 (i.e. no overlap to complete overlap).

To control for individuals' two-dimensional point locations, we used a Stochastic Partial Differentiation Equation (SPDE) effect in INLA. This effect models the distance between points to calculate spatial autocorrelation, using Matern covariance (Lindgren *et al.* 2011). This random effect used individuals' annual centroids (mean easting and northing in a given year) or lifetime centroids (mean easting and northing across all observations) as point locations to approximate spatial variation in the response variable (Lindgren *et al.* 2011; Albery *et al.* 2019).

We used a genomic relatedness matrix (GRM) using homozygosity at 37 000 Single Nucleotide Polymorphisms, scaled at the population level (Yang *et al.* 2011; for a population-specific summary, see Huisman *et al.* 2016). This matrix is well-correlated with pedigree-derived relatedness metrics (Huisman *et al.* 2016). HRO was well-correlated with distance between lifetime centroids (i.e. closer individuals tended to share more range), and both were weakly but significantly correlated with genetic relatedness (Figure S1).

To test whether social network positions could be explained by population density, we derived the local density of individuals again using AdeHabitatHR (Calenge 2011). We generated density kernels of observations, and then assigned individual deer their local population density based on their location on this kernel, following previous methodology developed in badgers (Albery *et al.* 2020a). This local density value was then fitted as a fixed explanatory variable. We used four different density metrics, each examining the density of a different observation type: lifetime centroids ('lifetime density'); annual centroids ('annual density'); all observations across the study period ('sighting density'); and all observations in the focal year ('annual sighting density'). Only one such density metric was fitted at once. We also calculated annual home range areas (HRA) by taking the 70% isopleth of each individual's annual space use distribution, following previous methodology (Froy *et al.* 2018). This HRA variable was fitted as a fixed effect in the same way as local density.

We constructed a series of 43 annual social networks using 'gambit of the group', where individuals in the same grouping event (as described above) were taken to be associating (Franks *et al.* 2010). Dyadic associations were calculated using the simple ratio index (Cairns & Schwager 1987) derived as a proportion of total sightings (grouping events) in which the focal individuals were seen together:  $\text{Sightings}_{A,B} / (\text{Sightings}_A + \text{Sightings}_B - \text{Sightings}_{A,B})$ , or  $\text{Intersect}_{A,B} / \text{Union}_{A,B}$ . In this dyadic matrix, 0 = never seen together and 1 = never seen apart.

## Statistical analysis

### Metrics

Using the annual social networks, we derived eight individual-level network metrics which that are commonly used across animal social networks and have been considered in detail (Whitehead 2008; Brent 2015; Krause *et al.* 2015; Firth *et al.* 2017). We set each of these network metrics for use as response variables in separate INLA Generalised Linear Mixed Models (GLMMs) with a Gaussian family specification. In increasing order of complexity, our measures included four direct sociality metrics, which only take into account an individual's connections with other individuals: (1) Group Size – the average number of individuals a deer associated with per sighting; (2) Degree – the number of unique individuals she was observed with; (3) Strength – sum of all their weighted social associations to others; (4) Mean Strength – an individual's average association strength to each of the unique individuals she was observed with (equivalent to strength divided by degree). We also included four more complex 'indirect' metrics (all using algorithms as specified from (Csardi & Nepusz 2006)), which also take into account an individual's connections' connections: (5) Eigenvector centrality – which considers the sum of their own connections and the sum of their associates' connections; (6) Weighted Eigenvector – which is akin to eigenvector centrality but also accounts for the weights of theirs, and their associates, connections; (7) Betweenness – the number of shortest paths that pass through the focal individual to traverse the whole network; (8) Clustering (local) – the tendency for an individual's contacts to be connected to one another, forming triads. The raw, untransformed correlations were assessed for all metrics, and R lay between  $-0.5$  and  $0.879$  across metrics (Figure S2). When modelling them as response variables, to approximate normality, all social metrics were square root-transformed apart from eigenvector centralities (which were left untransformed), group size (which was cube root-transformed), and betweenness (which was  $\log(X + 1)$ -transformed). Each social network metric was fitted as a response variable in a separate model set (as outlined conceptually in Figure 1).

### Base model structure

We ensured that all models followed the same base structure. Random effects included individual identity and year (categorical random intercepts), and the genetic relatedness matrix. Fixed effects included Age (continuous, in years), Reproductive Status (four categories: True Yeld, Summer Yeld, Winter Yeld, and Milk), and Number of observations (continuous, log-transformed to approximate normality), alongside year-level continuous factors including Year (continuous) and annual study Population Size (log-transformed). All continuous response and explanatory variables were standardised to have a mean of zero and a standard deviation of 1. Fixed effect estimates were provided by the mean and 95% credible intervals of the posterior estimate distribution.

### Adding spatial components

To investigate the divergent value of different spatial behaviours, we iteratively added spatial effects to the base model,

investigating which behaviours best fit the data. These spatial behaviours corresponded to four broad components in Figure 1: space sharing (HRO matrix), home range area (HRA), point locations (SPDE effect), and local population density (density fixed effect). For space sharing, we only used one metric: lifetime HRO (see above). For point locations, we selected between (1) lifetime centroids, (2) annual centroids and (3) annual centroids with a spatiotemporally varying annual field. For density, we used the four metrics outlined above ('lifetime', 'annual', 'sighting' and 'annual sighting' density). To distinguish between competitive models we used Deviance Information Criterion (DIC). In each round, we added each spatial behaviour individually and then kept the best-fitting one, until all four had been added.

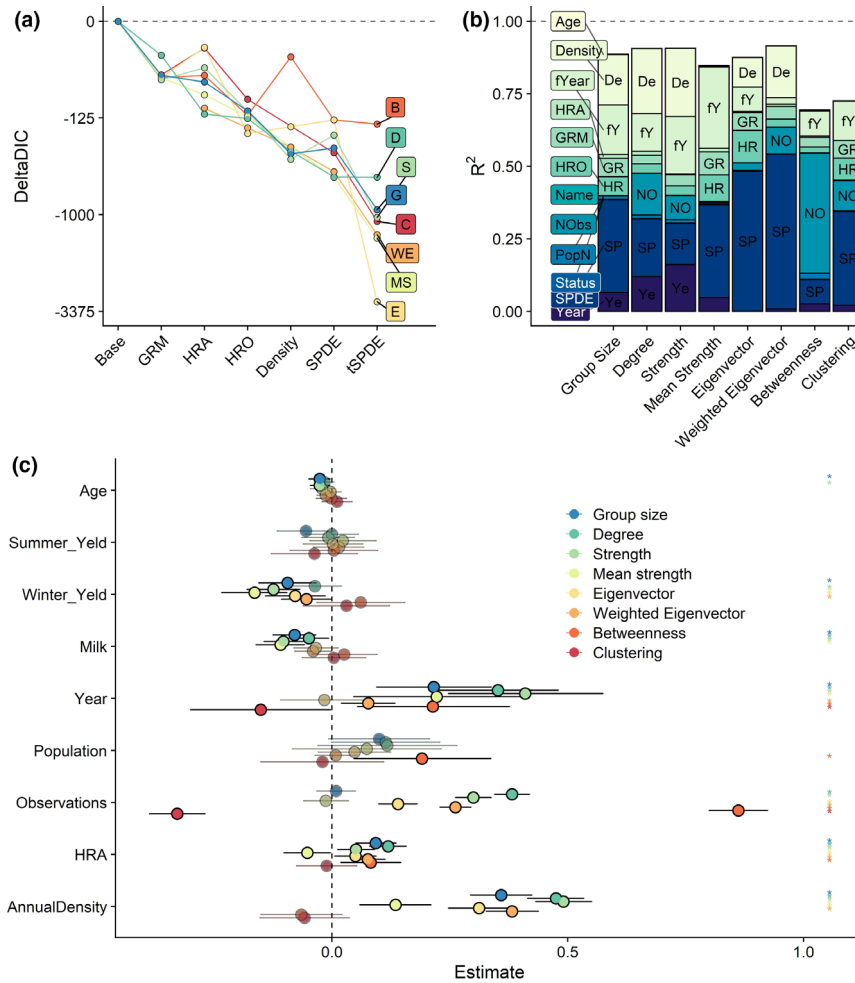
### Comparing all spatial and non-spatial drivers

To compare the relative importance of all fixed and random effects, we examined the model's predicted values and their correlations with the observed values, representing the proportion of the variance that was explained by the model (i.e.  $R^2$ ). We used the model to predict each social behaviour metric, and iteratively held each explanatory variable's predictions at the mean, one at a time. We then assessed the squared correlations of these values with the observed values, relative to those of the full model. Variables with greater effects in the model produced less accurate predicted values when held constant.

## RESULTS

Spatial behaviours were important in determining all eight individual-level social network position variables. The non-spatial model was far the poorest-fitting for all eight metrics, and the DIC changes associated with adding spatial components were substantial (Figure 3a). Generally, wide-ranging individuals and those living in areas of greater population density tended to be more central, and space sharing and point location effects both revealed substantial spatial autocorrelation (Figure 3).

Notably, point location-based SPDE effects improved model fit substantially in addition to HRA and density effects, and had a greater effect on model fit than space sharing HRO effects, even when conceptualised at the same timescale (i.e. across the individual's lifetime). Investigating the  $R^2$  components of the models containing only HRO (i.e. without SPDE effects) revealed that in general spatial overlap accounted for more variation than the genetic matrix (Figure S3), but comparing these with the other models revealed that the point location effects contributed more than either of these matrices (Figure 3b). Annually varying centroids further improved model fit, and allowing the spatial field to vary between years in our spatiotemporal models improved models even more (Figure 3a). Although the space sharing and genomic relatedness matrices had similar sized impacts on the full models (Figure 3b), removing the SPDE effect resulted in a substantial increase in the HRO effect, but with very little impact on the Genomic Relatedness Matrix's  $R^2$  (Figure S3). These findings were relatively consistent across all metrics (Figure 3a,b), although the SPDE effect was notably smaller for betweenness



**Figure 3** Model outputs demonstrating strong effects of spatial and non-spatial drivers on social network positions. a: DIC changes associated with addition of different spatial components, for all eight social network centrality measures. Variables are arranged in order of mean contribution to model fit, which varied little among response variables. Different colours correspond to different network centrality response variables, with the same colour key as panel C. GRM = Genomic Relatedness Matrix. HRA = Home Range Area. HRO = home range overlap. The SPDE models are differentiated into those using annual centroids ('SPDE') and the version with spatiotemporally varying annual spatial fields ('tSPDE'). b: Variance accounted for by each variable for all eight network position measures, expressed as contribution to  $R^2$  in the annual model (squared correlation between observed and predicted values). Different shades correspond to different variables. fYear = year as a categorical random effect. HRA = Home Range Area. GRM = Genomic Relatedness Matrix. HRO = home range overlap. Name = individual identity. NObs = number of observations (i.e. sampling bias). PopN = population size. Status = reproductive status. SPDE = point location effects estimated using the Stochastic Partial Differentiation Equation effect in the INLA models. For all response variables, individual level effects (Age, Reproductive Status, Name) had a negligible effect. c: Fixed effect estimates for the models. Fixed effects are grouped into individual factors (age and three reproductive status effects), annual factors (continuous time in years since study began, and annual population size) and sampling factors (observation number). Reproductive status effects are separated into four levels: did not reproduce (the intercept); calf died in the first few months of life ('Summer Yield'); calf died during the winter ('Winter Yield') and calf survived to May the following year ('Milk'). Different colours correspond to different network centrality response variables. Points represent the posterior mean; error bars denote the 95% credibility intervals for the effects. Asterisks denote significant variables (i.e. those whose estimates did not overlap with zero). Significant variables are fully opaque, whereas non-significant ones are transparent

(Figure 3b). Taken together, these results reveal that lifetime space sharing was good at accounting for variation in social behaviour, but that its effect was surpassed by increasingly complex temporal formulations of point location effects.

We compared the importance of all fixed and random effects by predicting selectively from the model, revealing overwhelmingly strong effects of spatiotemporal drivers (Figure 3b). Our models fit well and explained a substantial amount of variation in social network centrality (>70%); the majority of the fit was lent by a combination of the INLA

SPDE effect, fixed effects of local population density, and random effects of year (Figure 3b). Space sharing (HRO) and home range area (HRA) had comparatively small effects.

The number of observations also had a notable impact for Degree, Betweenness, and Clustering (Figure 3b). Fixed effects for year and observation numbers were generally strong and significantly positive across metrics, except in the case of clustering, for which observation number's effect was significantly negative (Figure 3b). There were also small

positive effects of population size on betweenness and degree centrality (Figure 3b).

Although individual-level drivers (reproduction, age and individual identity) had a negligible impact on all variables'  $R^2$  (Figure 3b), many had a significant effect (i.e. their 95% credibility intervals did not overlap with zero; Figure 3c). Individuals whose calves lived to the winter and then either died before the 1st May ('Winter Yeld') or survived ('Milk') were generally less central than those that did not give birth ('True Yeld') or whose calf died before 1st October ('Summer Yeld'). Similarly, there were minor age-related decreases in network centrality for the direct metrics (Group Size, Degree and Strength; Figure 3c).

To investigate spatial patterns of sociality when accounting for our fixed and random effects, we projected the annual SPDE random effect in two-dimensional space (Figure 4; Figures S5-S12). The spatial distributions of network centrality metrics were highly variable, but direct metrics generally peaked in the centre of the study system and decreased outwards (Figure 4). Mean Strength was an exception, being lowest in the centre and increasing outward (Figure 4d); Clustering was patchily distributed, such that no clear pattern was evident (Figure 4h) and Betweenness was slightly offset, being highest in the north-northeast of the study area rather than in the central north (Figure 4g). The range of autocorrelation also varied among metrics; Betweenness and Clustering had notably shorter ranges than the other metrics, showing that they change more rapidly in space (Figure S4). We also plotted the spatial fields through time, revealing substantial variation in the spatial fields across the study period (Figures S5-S12).

## DISCUSSION

### The role of spatial behaviour in driving social network structure

The position individuals occupy within their social networks can affect many aspects of their ecology and evolution (Krause *et al.* 2015; Firth *et al.* 2018; Sah *et al.* 2018), and our results confirm the powerful role of fine-scale spatial context in shaping such traits (e.g. Webber & Vander Wal, 2018; Farine & Sheldon, 2019; Mourier *et al.*, 2019). Capitalising on our models' ability to compare the influence of a wide range of spatial and non-spatial components, we found that spatial behaviour and environmental context were the most important correlates of social network centrality – more so than a suite of individual-level phenotypes and demographic factors. Individuals with larger ranges and inhabiting higher-density areas were more central in the social network, revealing the important role of individual spatial activity levels and location within the broader population structure. As expected, models were further improved when we incorporated pairwise space sharing and two-dimensional point locations, demonstrating that an individual's social network position is not determined simply by the density of nearby individuals and by its own spatial activity, but by other aspects of the fine-scale surrounding environment such as microclimate, resource distribution, and landscape architecture (Spiegel *et al.* 2018; Webber & Vander Wal 2018; He *et al.* 2019). Reciprocally, individuals

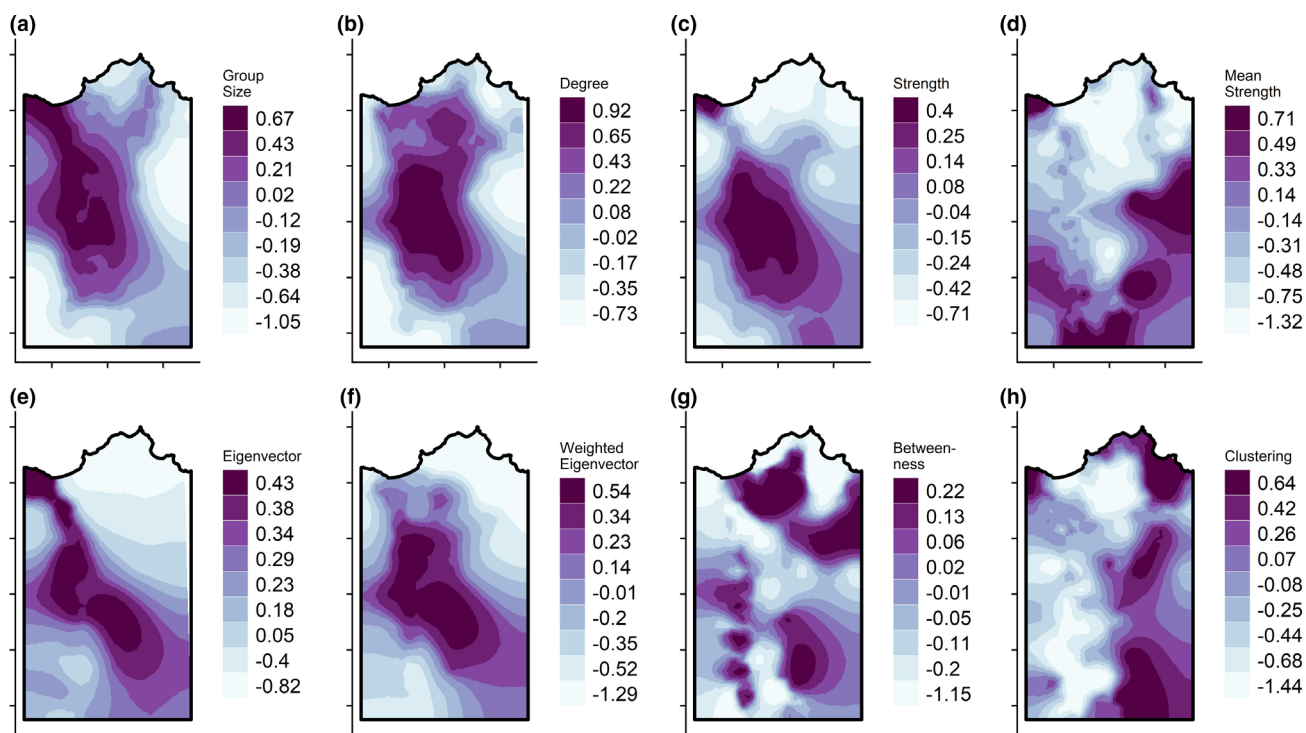
may be altering their spatial behaviour, e.g. opting to share more space or live closer together if they are more socially connected (Firth & Sheldon 2016; Spiegel *et al.* 2016). As such, we propose that social network studies should more regularly incorporate both space sharing and (temporally varying) point locations in their statistical approaches to anticipate these effects, alongside specific spatial behaviours thought to drive social network position. This practice will help to buffer for the fact that the spatial environment not only correlates with social proximity, but can alter the fabric of the network itself.

### The landscape of sociality

One of the foremost advantages of our approach is the ability to flexibly investigate two-dimensional spatial patterns of social network centrality. This allowed us to qualitatively assess the spatial structure of the social network, while providing clues towards the causal factors. Most notably, betweenness peaked in the north-northeast of the system, likely because the far northeastern community is relatively isolated from the rest of the population due to the landscape structure (Figure 2), so that many 'social paths' that traverse the population (the criteria for betweenness centrality) go through individuals in this intermediate (north-northeast) area. That is, individuals living in this area are more likely to be connected to both the far eastern communities and the central and western ones.

As expected, direct centrality metrics (group size, degree and strength) were affected by local population density, which peaks in the central north study area due to the concentration of high-quality grazing (Clutton-Brock *et al.* 1982). Individuals' resource selection behaviours increase local density in this area (Clutton-Brock *et al.* 1982; McLoughlin *et al.* 2006), and will increase social connectivity as a result (Ostfeld *et al.* 1986; Sanchez & Hudgens 2015; Webber & Vander Wal 2018). This comprises strong evidence for density-related increases in social contact frequency, and accentuates the vital importance of considering resource distribution, habitat selection, and population structure when examining social network correlates (Spiegel *et al.* 2016; Webber & Vander Wal 2018; Farine & Sheldon 2019; He *et al.* 2019). However, because density was accounted for as a fixed effect in the models, the spatial patterns of location effects for the direct metrics did not strictly follow the spatial pattern of density. Instead, these metrics peaked in the centre of the study population, demonstrating that individuals living in this central region are more well-connected *when accounting for population density*, and could represent a difficult-to-detect spatial observation bias or an edge effect where social pairs are less likely to occur at the fringes of the study system. Combining these spatial components allowed us to effectively differentiate what we do know (that greater population density drives increased social connectedness) from what we do not (the drivers of greater sociality for individuals in the central area).

Without using the SPDE effect (i.e. relying only on generalised pairwise space sharing rather than accounting for specific two-dimensional spatial patterns), these insights into these patterns may have been harder to detect. An alternative



**Figure 4** Spatial fields for the SPDE random effect for each response variable, taken from the INLA animal models and based on annual centroid point locations. Metrics can be conceptualised as simpler ‘direct’ metrics (top row) and more complex ‘indirect’ metrics (bottom row). Darker colours correspond to greater values. Each axis tick corresponds to 1km; for the values associated with the Easting and Northings, see Figure 1

method could involve splitting the population into subpopulations and analysing them separately or comparing them, but this method has been shown to be less powerful in this population (Albery *et al.* 2019), and is ultimately based on arbitrary choices if a population is mixed. The causes of the spatial distribution of clustering remain unresolved, but the pattern highlights areas where individuals are connected together in triads or tight cliques, and appears to be negatively correlated with betweenness (Figure 4). For traits such as this, it is unlikely that a simpler explanatory variable could be formulated to quantify the spatial-social processes at play.

Regardless of the causes of the spatial patterns, such fine-scale variation across the landscape holds important ecological consequences, particularly for the more complex network metrics. For instance, the areas of high clustering may act as ‘incubator’ areas where cliques can develop new socially influenced behaviours (Centola 2018; Guilbeault *et al.* 2018; Firth 2020). The high contact rates in the northern central areas might sustain high local burdens of directly transmitted diseases (Cote & Poulin 1995), whereas individuals inhabiting the high-betweenness intermediate areas may be important for transmitting novel diseases across the population as a whole (VanderWaal *et al.* 2014).

#### Analytical benefits of INLA animal models

Analyses using multiple layers of different behaviours are well-suited to extricating space and sociality in wild animal systems (Silk *et al.* 2018; Webber & Vander Wal 2018; Finn *et al.* 2019), and there is increasing conceptual and

analytical overlap with the related field of movement ecology (Jacoby & Freeman 2016; Mourier *et al.* 2019; Pasquarotta *et al.* 2021). Notably, many spatial-social studies suffer from the necessity to reduce complex movement patterns into simpler metrics, which risks losing important information in the process. As such, recent studies have pushed for researchers to incorporate movement trajectories themselves into complex network data structures (Mourier *et al.* 2019). Our approach allows incorporation of multiple dyadic and non-dyadic behavioural measures, and with several analytical timescales, offering an alternative workaround to this problem. Although other methods can control for point locations (e.g. using autoregressive processes and row/column effects; Stopher *et al.* 2012b), INLA models allow greater precision, fit quickly and allow incorporation of spatiotemporal structuring. Furthermore, plotting the SPDE effect in two dimensions, as in Figure 4, gives an easily interpretable and intuitive portrayal of network traits in space that can be hard to visualise using other methods. For these reasons, we highly recommend further exploration of INLA animal models as a flexible method with which to extricate individual, demographic, spatial and temporal contributors to sociality where sample sizes are sufficient (Thomson *et al.* 2018; Webber & Vander Wal 2018). In addition to carrying out network-level manipulations (Darganova *et al.* 2012; Davis *et al.* 2015; Firth & Sheldon 2016; Farine 2017), researchers concerned about spatial confounding could implement relatively familiar linear models of social behaviour, but with additional spatial components such as SPDE random effects and similarity matrix variance



components, with trustworthy and interpretable results (Albery *et al.* 2021).

### Non-spatial drivers of social network positioning

Although space accounted for an overwhelming amount of variation, many non-spatial factors had substantial effects. The random effect for interannual variation was substantial, and there were detectable linear annual effects and population size effects, as expected given the important roles of demography in structuring social networks (Shizuka & Johnson 2020). Interestingly, there was a substantial positive association with study year that was not attributable to the growth in population size over the same period. It is possible that this represents a change in the deer's social phenotypes over time, although the potential mechanisms would benefit from further examination. Individual-level factors had weaker contributions to model fit and smaller effect sizes: most notably, genetic and individual random effects were negligible when spatial autocorrelation was accounted for, confirming the importance of considering space when assessing heritability in this population (Stopher *et al.* 2012a). Nevertheless, individual-level effects were encouragingly still detectable and significant, particularly for simpler 'direct' metrics. It is possible that more complex social network positions are less determined by individual social behaviours, particularly for animals with fission–fusion societies such as the deer; this hypothesis could be tested using similar spatial-social analyses in a number of other systems. This finding demonstrates that even when spatial structuring plays a vital role in determining social network structure, controlling for this structuring analytically can reveal important, conservative individual-level effects. Future analyses within this population, and potentially other long-term studies, could take advantage of this framework by including environmental drivers such as food availability and climatic factors to explain patterns of social connectivity, while further unpicking the causes of the individual-level trends that we observed.

Our revelation that sociality covaries predictably with a suite of different spatial behaviours contributes to a rapidly growing literature connecting elements of the external environment, intrinsic phenotypes, spatial behaviours, and social network structure in wild animals. By employing similar approaches, we hope that future investigations in this and other ecological systems will be able to more easily identify, interrogate and deconstruct the interplay between multiple spatial and social behaviours. As well as increasing the robustness of such studies to spatial confounding, the multivariate nature of these analyses will help to open up new and exciting avenues for investigating the spatial-social interface in ecology.

### ACKNOWLEDGEMENTS

We thank Scottish Natural Heritage and its predecessors for permission to work on the Isle of Rum NNR. The field project has been supported by grants mainly from the UK NERC with some additional funding from BBSRC, the Royal Society and ERC. We thank all who have contributed to the maintenance of the project over time, especially Loeske Kruuk. We

thank multiple dedicated field workers who have contributed to field data collection, especially Fiona Guinness who collected the first 20 years of census data. GFA was funded by NSF grant number 1414296, and by a Bruce McEwen Career Development Fellowship from the Animal Models for the Social Dimensions of Health and Aging Research Network (NIH/NIH R24 AG065172). JAF was supported by a fellowship from Merton College and BBSRC (BB/S009752/1) and funding from NERC (NE/S010335/1). We thank Amy Sweeny and Quinn Webber for comments on the manuscript, as well as Matt Silk, Orr Spiegel, and one anonymous reviewer.

### AUTHORSHIP STATEMENT

GFA conceived the study, analysed the data and wrote the manuscript, advised by JAF. AM and SM collected the data. JAF, JMP, THCB and DN commented on the manuscript.

### PEER REVIEW

The peer review history for this article is available at <https://publons.com/publon/10.1111/ele.13684>.

### DATA AVAILABILITY STATEMENT

The code used here is available at [https://github.com/gfalbery/Special\\_Deer](https://github.com/gfalbery/Special_Deer). On acceptance, the data will be uploaded to the same repo, which will be archived on Zenodo.

### REFERENCES

- Albery, G.F., Becker, D.J., Kenyon, F., Nussey, D.H. & Pemberton, J.M. (2019). The fine-scale landscape of immunity and parasitism in a wild ungulate population. *Integr. Comp. Biol.*, *icz016*, 1–11.
- Albery, G.F., Kirkpatrick, L., Firth, J.A. & Bansal, S. (2021). Unifying spatial and social network analysis in disease ecology. *J. Anim. Ecol.*, *90*(1), 45–61.
- Albery, G.F., Newman, C., Ross, J.B.G.B., Macdonald, D.W., Bansal, S., Buesching, C.D. *et al.* (2020a). Negative density-dependent parasitism in a group-living carnivore. *Proc. R. Soc. B Biol. Sci.*, *287*, 20202655.
- Albery, G.F., Watt, K.A., Keith, R., Morris, S., Morris, A., Kenyon, F. *et al.* (2020b). Reproduction has different costs for immunity and parasitism in a wild mammal. *Funct. Ecol.*, *34*, 229–239.
- Brent, L.J.N. (2015). Friends of friends: are indirect connections in social networks important to animal behaviour? *Anim. Behav.*, *103*, 211–222.
- Cairns, S.J. & Schwager, S.J. (1987). A comparison of association indices. *Anim. Behav.*, *35*, 1454–1469.
- Calenge, C. (2011). Home range estimation in R: the adehabitatHR package. Available at: <https://cran.r-project.org/web/packages/adehabitatHR/index.html>. Last accessed 10 March 2020.
- Castles, M., Heinsohn, R., Marshall, H.H., Lee, A.E.G., Cowlshaw, G. & Carter, A.J. (2014). Social networks created with different techniques are not comparable. *Anim. Behav.*, *96*, 59–67.
- Centola, D. (2018). *How Behavior Spreads: The Science of Complex Contagions*. Princeton Analytical Sociology Series. Princeton University Press, Princeton, NJ.
- Clutton-Brock, T.H., Albon, S.D. & Guinness, F.E. (1989). Fitness costs of gestation and lactation in wild mammals. *Nature*, *337*, 260–262.
- Clutton-Brock, T.H., Guinness, F.E. & Albon, S.D. (1982). *Red Deer: Behavior and Ecology of Two Sexes*. University of Chicago Press, Chicago, IL.
- Cote, I.M. & Poulin, R. (1995). Parasitism and group size in social animals: a meta-analysis. *Behav. Ecol.*, *6*, 159–165.

- Croft, D.P., James, R. & Krause, J. (2008). *Exploring Animal Social Networks*. Princeton University Press, Princeton, NJ.
- Csardi, G. & Nepusz, T. (2006). The igraph software package for complex network research. *InterJournal Complex Syst, Complex Sys*, 1695.
- Daraganova, G., Pattison, P., Koskinen, J., Mitchell, B., Bill, A., Watts, M. *et al.* (2012). Networks and geography: modelling community network structures as the outcome of both spatial and network processes. *Soc. Networks*, 34, 6–17.
- Davis, S., Abbasi, B., Shah, S., Telfer, S. & Begon, M. (2015). Spatial analyses of wildlife contact networks. *J. R. Soc. Interface*, 12(102), 20141004.
- Farine, D.R. (2017). A guide to null models for animal social network analysis. *Methods Ecol. Evol.*, 8, 1309–1320.
- Farine, D.R. & Sheldon, B.C. (2019). Stable multi-level social structure is maintained by habitat geometry in a wild bird population. *bioRxiv*, 1–30. Available at: <https://www.biorxiv.org/content/10.1101/085944v2>. Last accessed 1 April 2020.
- Finn, K.R., Silk, M.J., Porter, M.A. & Pinter-Wollman, N. (2019). The use of multilayer network analysis across social scales in animal behaviour. *Anim. Behav.*, 149, 7–22.
- Firth, J.A. (2020). Considering complexity: animal social networks and behavioural contagions. *Trends Ecol. Evol.*, 35, 100–104.
- Firth, J.A., Cole, E.F., Ioannou, C.C., Quinn, J.L., Aplin, L.M., Culina, A. *et al.* (2018). Personality shapes pair bonding in a wild bird social system. *Nat. Ecol. Evol.*, 2, 1696–1699.
- Firth, J.A. & Sheldon, B.C. (2016). Social carry-over effects underpin trans-seasonally linked structure in a wild bird population. *Ecol. Lett.*, 19, 1324–1332.
- Firth, J.A., Voelkl, B., Crates, R.A., Aplin, L.M., Biro, D., Croft, D.P. *et al.* (2017). Wild birds respond to flockmate loss by increasing their social network associations to others. *Proc. R. Soc. B: Biol. Sci.*, 284 (1854), 20170299.
- Franks, D.W., Ruxton, G.D. & James, R. (2010). Sampling animal association networks with the gambit of the group. *Behav. Ecol. Sociobiol.*, 64, 493–503.
- Froy, H., Börger, L., Regan, C.E., Morris, A., Morris, S., Pilkington, J.G. *et al.* (2018). Declining home range area predicts reduced late-life survival in two wild ungulate populations. *Ecol. Lett.*, 21, 1001–1009.
- Froy, H., Walling, C.A., Pemberton, J.M., Clutton-brock, T.H. & Kruuk, L.E.B. (2016). Relative costs of offspring sex and offspring survival in a polygynous mammal. *Biol. Lett.*, 12, 20160417.
- Guilbeault, D., Becker, J. & Centola, D. (2018). Complex contagions: a decade in review. In: *Complex Spreading Phenomena in Social Systems* (eds Lehmann, S. & Ahn, Y.). Springer Nature, New York, NY. (Forthcoming).
- He, P., Maldonado-chaparro, A.A. & Farine, D.R. (2019). The role of habitat configuration in shaping social structure: a gap in studies of animal social complexity. *Behav. Ecol. Sociobiol.*, 73(1), 1–14.
- Holand, A.M., Steinsland, I., Martino, S. & Jensen, H. (2013). Animal models and integrated nested laplace approximations. *Genes Genomes Genetics*, 3, 1241–1251.
- Huisman, J., Kruuk, L.E.B., Ellis, P.A., Clutton-Brock, T.H. & Pemberton, J.M. (2016). Inbreeding depression across the lifespan in a wild mammal population. *Proc. Natl. Acad. Sci.*, 113, 201518046.
- Jacoby, D.M.P. & Freeman, R. (2016). Emerging network-based tools in movement ecology. *Trends Ecol. Evol.*, 31, 301–314.
- Krause, J., James, R., Franks, D.W. & Croft, D.P. (2015). *Animal Social Networks*. Oxford University Press, Oxford, UK.
- Kruuk, L.E.B. (2004). Estimating genetic parameters in natural populations using the “animal model”. *Philos. Trans. R. Soc. B Biol. Sci.*, 359, 873–890.
- Lindgren, F., Rue, H. & Lindstrom, J. (2011). An explicit link between Gaussian fields and Gaussian Markov random fields: the stochastic partial differential equation approach. *J. R. Stat. Soc. B*, 73, 423–498.
- Lindgren, F. & Rue, H. (2015). Bayesian spatial modelling with R-INLA. *J. Stat. Softw.*, 63, 1–25.
- McLoughlin, P.D., Boyce, M.S., Coulson, T. & Clutton-brock, T. (2006). Lifetime reproductive success and density-dependent, multi-variable resource selection. *Proc. R. Soc. B Biol. Sci.*, 273(1593), 1449–1454.
- Mourier, J., Lédée, E.J.I. & Jacoby, D.M.P. (2019). A multilayer perspective for inferring spatial and social functioning in animal movement networks. *bioRxiv*. Available at: <https://www.biorxiv.org/content/10.1101/749085v1>. Last accessed 1 April 2020.
- Ostfeld, R.S., Lidicker, W.Z., Heske, E.J., Ostfeld, R.S., Lidicker, W.Z. & Heske, E.J. (1986). The relationship between habitat heterogeneity, space use, and demography in a population of California voles. *J. Mammal.*, 45, 433–442.
- Pasquarella, C., Dubois, T., Gomez-Moracho, T., Delepouille, V.P., Le Loc'h, G., Heeb, P. & *et al.* (2021). Analysis of temporal patterns in animal movement networks. *Methods Ecol. Evolution*, 12(1), 101–113.
- Pinter-Wollman, N., Hobson, E.A., Smith, J.E., Edelman, A.J., Shizuka, D., De Silva, S. *et al.* (2014). The dynamics of animal social networks: analytical, conceptual, and theoretical advances. *Behav. Ecol.*, 25, 242–255.
- Regan, C.E., Pilkington, J.G., Berenos, C., Pemberton, J.M., Smiseth, P.T. & Wilson, A.J. (2016). Accounting for female space sharing in St. Kilda Soay sheep (*Ovis aries*) results in little change in heritability estimates. *J. Evol. Biol.*, 30, 96–111.
- Robert, K., Garant, D. & Pelletier, F. (2012). Keep in touch: Does spatial overlap correlate with contact rate frequency? *J. Wildl. Manage.*, 76, 1670–1675.
- Sah, P., Mann, J. & Bansal, S. (2018). Disease implications of animal social network structure: a synthesis across social systems. *J. Anim. Ecol.*, 87, 546–558.
- Sanchez, J.N. & Hudgens, B.R. (2015). Interactions between density, home range behaviors, and contact rates in the Channel Island fox (*Urocyon littoralis*). *Ecol. Evol.*, 5, 2466–2477.
- Shizuka, D. & Johnson, A.E. (2020). How demographic processes shape animal social networks. *Behav. Ecol.*, 31(1), 1–11. <https://doi.org/10.1093/beheco/azr083>
- Silk, M.J., Finn, K.R., Porter, M.A. & Pinter-Wollman, N. (2018). Can multilayer networks advance animal behavior research? *Trends Ecol. Evol.*, 33, 376–378.
- Silk, M.J., Hodgson, D., Rozins, C., Croft, D., Delahay, R., Boots, M. *et al.* (2019). Integrating social behaviour, demography and disease dynamics in network models: applications to disease management in declining wildlife populations. *Philos. Trans. R. Soc. B*, 374, 20180211.
- Sosa, S., Sueur, C. & Puga-Gonzalez, I. (2021). Network measures in animal social network analysis: their strengths, limits, interpretations and uses. *Methods Ecol. Evolution*, 12(1), 10–21.
- Spiegel, O., Leu, S.T., Sih, A. & Bull, C.M. (2016). Socially interacting or indifferent neighbours? Randomization of movement paths to tease apart social preference and spatial constraints. *Methods Ecol. Evol.*, 7 (8), 971–979.
- Spiegel, O., Sih, A., Leu, S.T. & Bull, C.M. (2018). Where should we meet? Mapping social network interactions of sleepy lizards shows sex-dependent social network structure. *Anim. Behav.*, 136, 207–215.
- Stopher, K.V., Nussey, D.H., Guinness, F., Morris, A., Pemberton, J.M., Clutton-Brock, T.H. *et al.* (2012a). Re-mating across years and intralines polygyny are associated with greater than expected levels of inbreeding in wild red deer. *J. Evol. Biol.*, 25, 2457–2469.
- Stopher, K.V., Walling, C.A., Morris, A., Guinness, F.E., Clutton-Brock, T.H., Pemberton, J.M. *et al.* (2012b). Shared spatial effects on quantitative genetic parameters: accounting for spatial autocorrelation and home range overlap reduces estimates of heritability in wild red deer. *Evolution*, 66, 2411–2426.
- Thomson, C.E., Winney, I.S., Salles, O.C. & Pujol, B. (2018). A guide to using a Multiple-Matrix animal model to disentangle genetic and nongenetic causes of phenotypic variance. *PLoS One*, 13, e0197720.
- Vander Wal, E., Laforge, M.P. & McLoughlin, P.D. (2014). Density dependence in social behaviour: home range overlap and density interacts to affect conspecific encounter rates in a gregarious ungulate. *Behav. Ecol. Sociobiol.*, 68, 383–390.

- VanderWaal, K.L., Atwill, E.R., Isbell, L.A. & McCowan, B. (2014). Linking social and pathogen transmission networks using microbial genetics in giraffe (*Giraffa camelopardalis*). *J. Anim. Ecol.*, 83, 406–414.
- Webber, Q.M.R. & Vander Wal, E. (2018). An evolutionary framework outlining the integration of individual social and spatial ecology. *J. Anim. Ecol.*, 87, 113–127.
- Whitehead, H. (2008). *Analyzing Animal Societies: Quantitative Methods for Vertebrate Social Analysis*. University of Chicago Press, Chicago, IL.
- Yang, J., Lee, S.H., Goddard, M.E. & Visscher, P.M. (2011). GCTA: a tool for genome-wide complex trait analysis. *Am. J. Hum. Genet.*, 88, 76.
- Zuur, A.F., Ieno, E.N. & Saveliev, A.A. (2017). *Beginner's Guide to Spatial, Temporal, and Spatial-Temporal Ecological Data Analysis with R-INLA*. Highstat Ltd. Available at: <https://www.amazon.co.uk/Be>

ginners-Temporal-Spatial-Temporal-Ecological-Analysis/dp/0957174195. Last accessed 1 April 2020.

#### SUPPORTING INFORMATION

Additional supporting information may be found online in the Supporting Information section at the end of the article.

Editor, Andrew Sih

Manuscript received 9 June 2020

First decision made 22 December 2020

Manuscript accepted 23 December 2020